

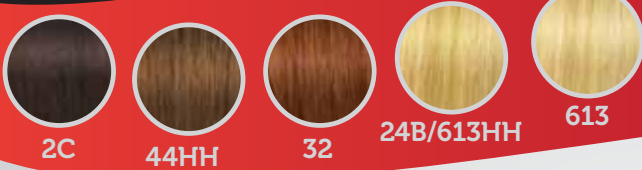
*Hair
Affair*[™]

18"
LENGTH



6 PIECE DUAL
TAPE IN EXTENSION SYSTEM

NEW!
COLOURS



100% | **Reusable Human Remy Hair**

Get the longer, fuller hair you've always wanted in a matter of minutes! Our new Hair Affair Dual Tape Extensions are quick and easy to install and give you long, luxurious locks in only 30 – 60 minutes and NOW available in 20 shades! Can be seamlessly integrated with the Hair Affair Tape'nLock system.

Stylist Benefits:

- High quality 100% Remy Hair
- Long-lasting medical grade adhesive
- No expensive application tools required
- Fast installation and removal
- Quick and easy re-taping process
- Valuable salon service - Increase Salon/Stylists profits

Client Benefits:

- High quality 100% Remy Hair
- Lasts up to 8 weeks or more
- Reusable
- Fast installation and removal
- No damage to natural hair
- Easy to style
- Saves precious customer time and money

COLOURS



WF4004
REPLACEMENT TAPE ROLL

SS6902
REMOVER SOLUTION DABBER

BR4100
LOOP BRUSH





BEFORE

Caring for your Extension

Prior to washing, gently comb to remove any tangles. If the hair is very tangled, use a spray-on conditioner before washing. Use a conditioning shampoo and warm water to gently work lather from the ends to the scalp. Do not scrub and always rinse hair from scalp to ends. Follow with conditioner avoiding the tape line. Gently squeeze out excess moisture using a towel and with a hair dryer on a low setting, dry the tape areas prior to drying the rest of the hair. All thermal tools should be used on a low setting to avoid scorching the hair and the tape areas should be avoided to prevent heating of the tape and slippage of the panel. Steam rollers are the safest way to curl your extensions again, avoiding the tape line. It is recommended to braid or tie your hair when sleeping; only professional stylists should cut and style your extensions; do not use colour or bleach on the extensions; keep conditioning and shine products that contain silicones away from the attachment point of your extensions as these products can cause them to slip.

First Lady Products
2180 Matheson Blvd. East, Unit 1,
Mississauga, ON L4W 5E1 CANADA
Made in China

WWW.FIRSTLADYPRODUCTS.COM

PLACEMENT OF YOUR EXTENSIONS:

For a full-head installation, always apply dual tapes starting just below the ears. Starting from the centre of the head, work towards each ear keeping about an inch away from the hair line. Work up towards the crown area leaving at least one inch between each row. For volumizing or colour enhancement, the dual tapes can be placed randomly. Let your creativity be your guide.

Step-by-Step Installation

Wash hair 2 times with a professional clarifying shampoo. Hair must be free of any hair products – 100% clean and dry prior to installation.



1 Section hair to match the hair extension width.



2 Place the hair extension panel under the section keeping ½ to 1 cm. from the scalp. Carefully place your section of hair onto the tape line while gently rolling the tail of the comb down the extension.



3 Use tail comb to secure the tape to the hair.



4 Using the tail comb, gently lift away any hair not secured to the tape. Too much hair between the tape sections will interfere with the adhesion.



5 Place the second panel on top of the first securing the client's own hair between the two panels.



6 Press the section firmly together.

Removal:

Dab removal solution on to the tape line using Hair Affair Removal Solution, then use tail comb to gently separate the panels. Slide out extensions. Extensions are now ready to be washed, cleaned and re-taped.